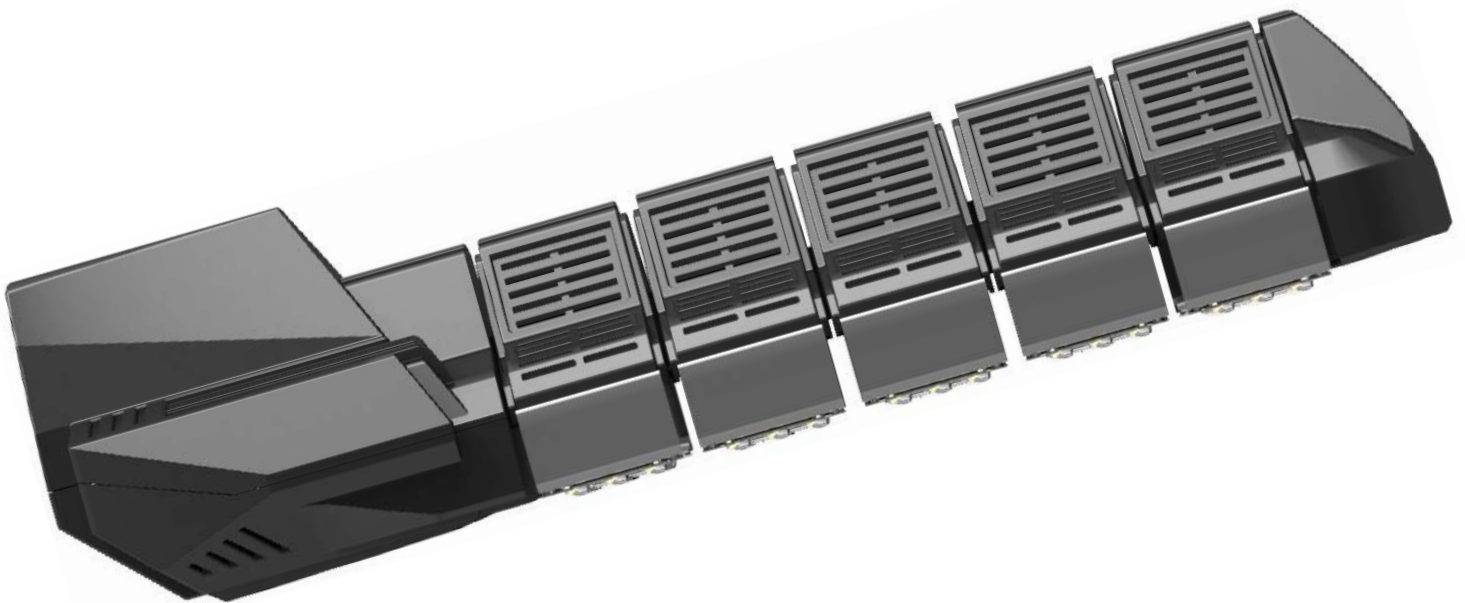


# LX-SL120 Specification



High Power LED Street Light LX-SL120

# Main Parameters

- More than 70% energy saving
- 3x8 LED module design, convenient for maintenance
- Original American CREE LED or Philips Lumileds LED used
- Universal input voltage: AC 85-265V/277V /DC10-28V
- Light control and time-phase dimming, saving further energy
- High quality power supply, reliable and stable
- Automatically reduce current against overheating temperature
- Unique optical design & rectangular beam, suitable for roadway illumination

LUX is proud of its High Power LED Street Light Series. High Power LED street lights are new series of energy saving products that utilize high power LEDs as effective lighting source to traditional illumination.

Based on the classic modular design-our first generation LED street light, our upgraded generation improves the module design as 3 × 8 arrays. Although LEDs were deducted, but the light efficiency is much higher and much more effective based on the dual lens design, this kind of design has really achieved a high luminous efficiency, low power consumption and excellent heat dissipation characteristics. By scientific calculating, the whole lamp lighting efficiency can raise by 20%, temperature rising can be decreased by 20% and the energy saving rate can be increased by 20%.

## Application:

LED Street Light is available for Main Road, Sidewalk, Square, School, Park, Garden, Factory, Residential Places, Villa and many other projector lighting places.

## Conseguimento certificazioni:



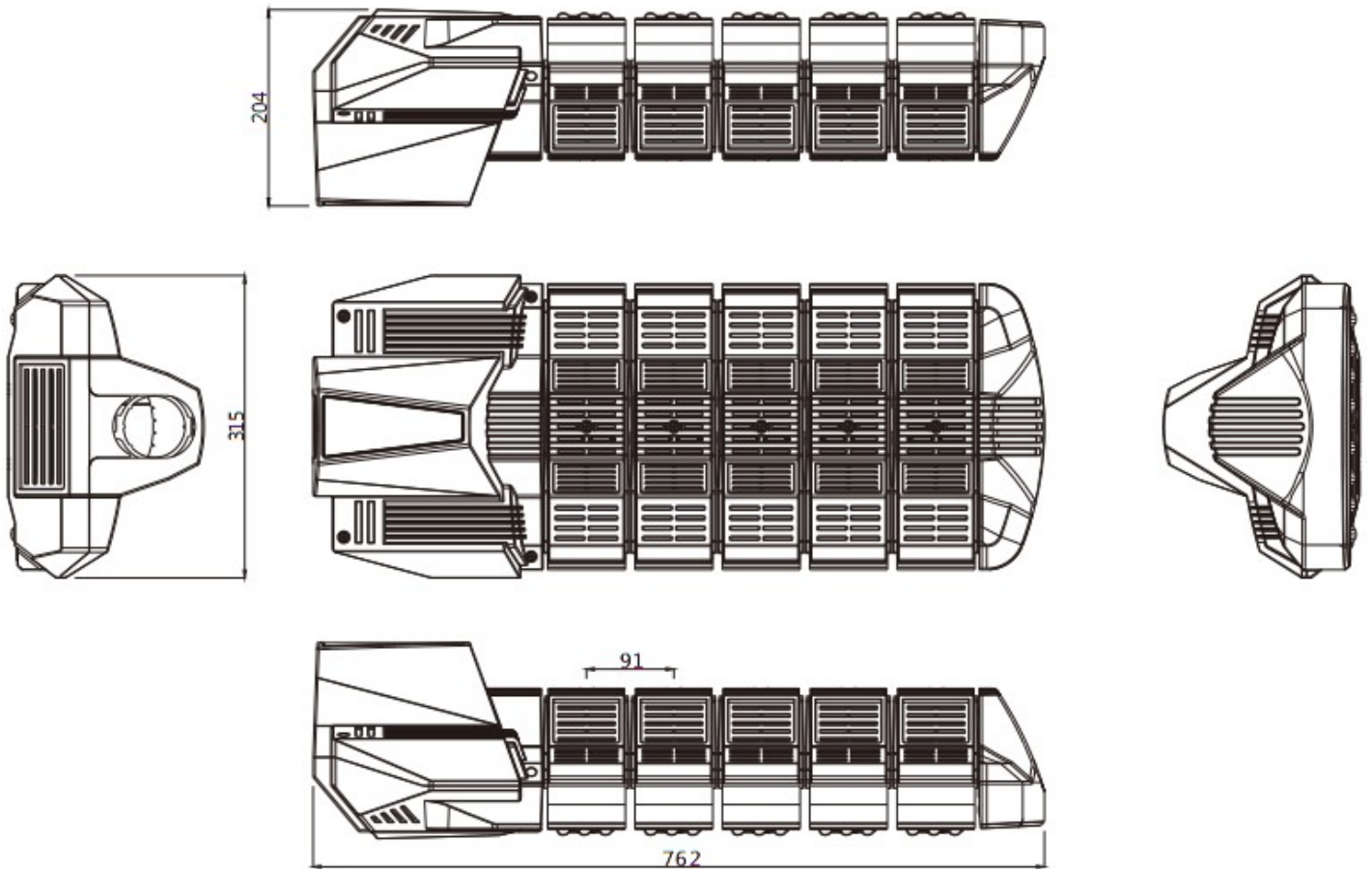
**High Power LED Street Light LX-SL120**

**Main Technology Index:**

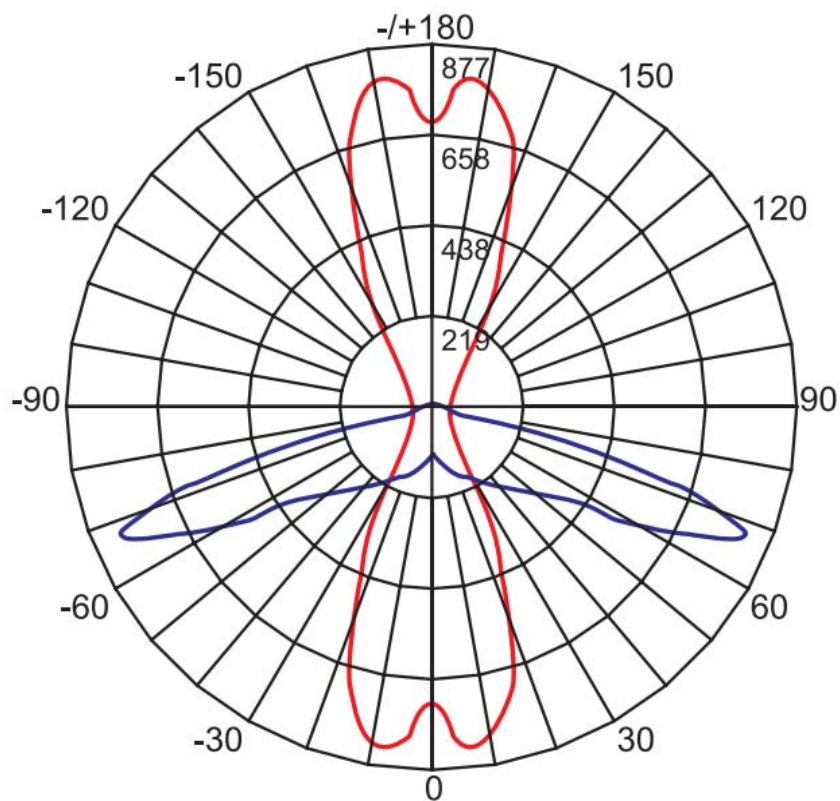
Model No.	LX-SL120	
Equivalent	<b>350W High Pressure Sodium Lamp</b>	
LED Light Source	120 × 1W CREE LED / Philips Lumileds	
LED Luminous Efficiency	107-122 lm/w	
Lamp Total Power	150 W	
Power Efficiency	>91%	
Lamp Rated Luminous Flux	>14300lm	
Lamp Rated Luminous Efficiency	>95lm/W	
Average Illumination & Effective Area	8M Height	34m×8m ≥57LUX
	10M Height	40m×10m ≥36LUX
	12M Height	50m×13m ≥25LUX
Color Rendering Index(CRI)	Ra>75	
Color Temperature	Cool white: 5700K Pure white: 4500K Warm white: 3000K	
Beam Angle	140° x 75°	
Light Distribution Curve(Beam Pattern)	Asymmetric (Bat Wing) / Rectangular Beam	
Input Voltage	AC 85-265V/277V ; DC 10-28V	
Frequency Range	47-63Hz	
Power Factor(PF)	0.99	
Total Harmonic Distortion(THD)	< 15%	
Storage Temperature	-40℃--+80℃	
Working Environment	-40℃--+50℃ ; 10%-95%RH	
Junction Temperature(Tj)	60℃ ± 10%(ta=25℃)	
Light Body and Lampshade Material	Aluminum Alloy and ASA / PC	
Working Lifetime	> 50,000hrs	
IP Rating	IP66	
Net Weight	10.2kg	
Gross Weight	11.5kg	
Product Size (mm)	762×315×204	
Package Size(mm)	830×370×280(1PC)	

**High Power LED Street Light LX-SL120**

# Product Size



# Lighting Distribution Curve



High Power LED Street Light LX-SL120



# Installation Instructions

1. When open the package, please check whether the inside is including product, accessory, label, certificate quality. And please assure that the light is perfect without any damage.
2. The wires of LED Street Light is three-core, the standard size of the wire is 3\*1mm<sup>2</sup> or 3\*1.5mm<sup>2</sup> and the outer diameter is Φ7~12mm, brown wire is live line, blue wire is null line, yellow & green is ground line.
3. LED Street Light will work when the voltage up to rated voltage, so please be sure the voltage within the requested range, or it will damage the light which can't be repaired.
4. when the electrical continuity is connected, the lead wire should be in electric insulating

The way of connect wire: |



The Standard design of LED Street Light:

Requirements	Road width		
	2 Lane	4 Lane	Above 6 Lane
The installation height	<8 m	8-10 m	>12m
Lamp Pole Space	15-25m	30-40m	>40m
LUX request	10-20 lx	20-30 lx	>30lx
Power	<80W	80-160W	>200W
Installation way	Unilateral Arrangement	Unilateral or Bilateral Arrangement	Bilateral Arrangement



## Attention

1. In order to make sure the light can work safety and stability, the ground line should be connected the earth.
2. When connecting the wires please turn off the power, and check whether the wires are connected correctly. Never connect the wires in opposite way, or the power should not be turned on.
3. Please keeping the trip bolt being fastening and reliable, in case of the light fall down of looseness.
4. When finishing connect the wires, please use the insulation gummed tape to convolve the wires, confirm the insulation and solve the waterproof problem.

High Power LED Street Light LX-SL120

**More Details Please Contact With Us**

**Guarantee for the quality and sales service:**

LUX series LED Street Light is a new style green energy saving led lighting, we offer 3 years warranties.

Any question happens when opening the package, please feel free to contact with our sales service department, we will ask our professional engineer to help you solve your question asap.

**LUX will not offer any guarantee in the following situation:**

- ◆ The damage due to incorrect installation and operation or using the light not in the regulated working ambient.
- ◆ The damage due to abusing or misusing, without well protection or happens in transition.
- ◆ The damage due to customers open the lamp without authored or replacement the LUX confirmed accessories by themselves.
- ◆ The Damage due to personal or nature disaster and other things can't be predicted.

**Shenzhen LUX Lighting Co.,Ltd**

**Address: F Building, ChengDeXuan Industrial Park, LiSongLang Village, GuangMing New District, Shenzhen, China**

**Web: [www.luxled-china.com](http://www.luxled-china.com)**

**Tel: +86-755-33890887 / 33890898 / 33890891 / 33890892**

**Fax: +86-755-33890893**